




**Connecticut School-Based
Diversion Initiative**

Jeana R. Bracey, PhD
Associate Vice President of School and
Community Initiatives
The Child Health and Development Institute of CT
June 30, 2021







Child Health and Development Institute

Our Vision

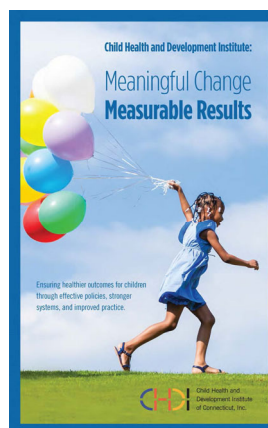
All children will grow up healthy and thrive.

Our Mission

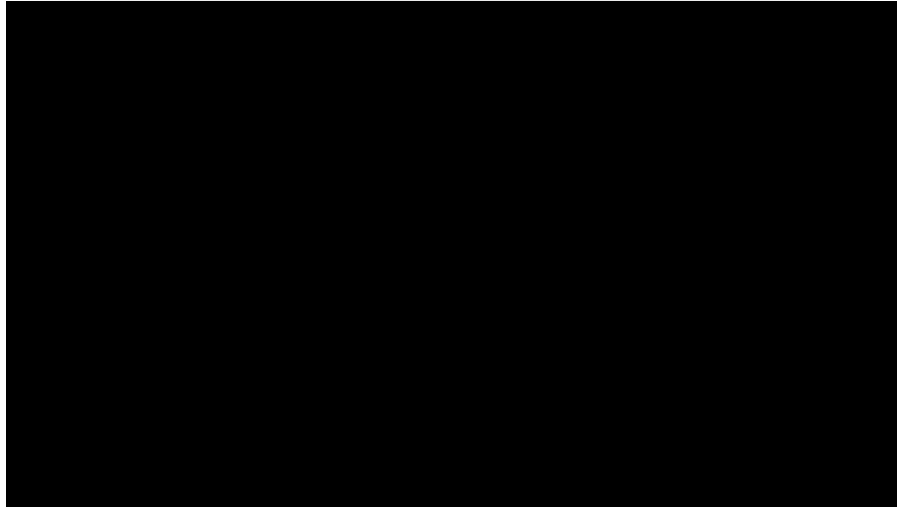
Advance effective, integrated health and behavioral health systems, practices, and policies that result in equitable and optimal health and well-being for children, youth, and families.

Our Strategy

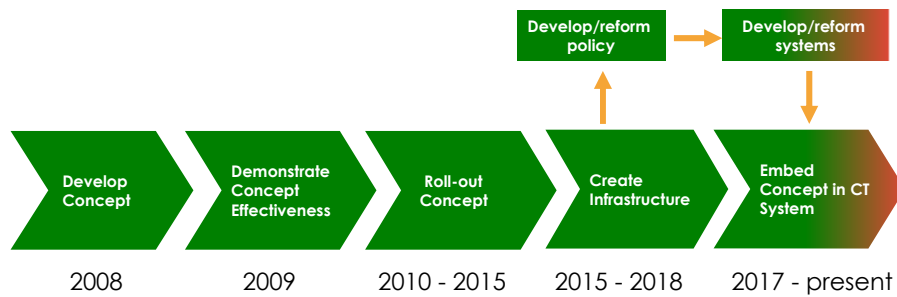
We identify, demonstrate, support and promote effective health and mental health care innovations and improvements, working closely with providers, policymakers, academic institutions and state agencies.



SBDI Video



SBDI Timeline



Goals of the School-Based Diversion Initiative



Reduce the number of discretionary arrests in school; reduce expulsions and out-of-school suspensions

Build knowledge and skills among teachers, school staff, and school resource officers to recognize and manage behavioral health crises in the school, and access needed community resources



Link youth who are at-risk of arrest to appropriate school and community-based services and supports

SBDI Core Components

Professional Development

- Training and Workgroups

Community Coalition Building

- Mobile Crisis Intervention Services
- Systems of Care

Discipline Policy Consultation

- Graduated Response Model
- Restorative Practices

Implementation Guided by SBDI Toolkit

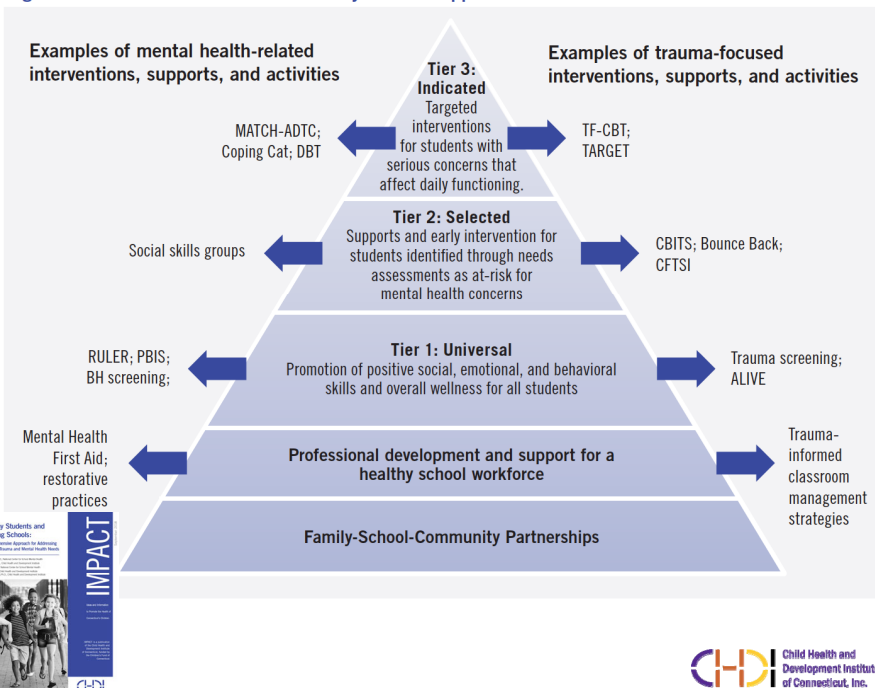
Professional Development

Goal: Enhance knowledge, attitudes, and skills among school staff to support arrest diversion principles and practices

Training and Workgroup Modules include:

- Crisis De-escalation and Effective Classroom Behavior Management
- Understanding Adolescent Development and Recognizing Child Trauma
- Effective Collaborations with Mobile Crisis and Care Coordination
- Multicultural Competence in the Schools and RED
- Understanding and Partnering with the Juvenile Justice System and Local Law Enforcement
- Engaging Parents of Youth with Mental Health Needs
- Promoting School Climate and Connectedness
- Incorporating Restorative Practices

Figure 1: Trauma-Informed Multi-Tiered System of Supports for School Mental Health



Family and Community Partners

Community coalition-building

- Mobile response/crisis stabilization service
- Care Coordination
- System of Care collaborative
- Family members and students
- Advocates
- Pediatric primary care providers
- Clergy/faith-based partners
- Local police departments/SROs
- Juvenile Probation officers and Courts
- Juvenile review/alternative discipline
- Racial/ethnic disparities committees



Mobile Crisis Intervention Services

Component of CT's behavioral health system

- Funded and managed by DCF
- Available FREE to all CT children

Access: Dial 2-1-1

- Phone support 24/7, 365
- Mobile hours M-F 6am-10pm; Weekends/holidays 1pm-10pm

Rapid response to behavioral crises

- 90%+ mobility rate
- On site in 45 min. or less

Crisis stabilization, assessment, brief treatment, linkage to ongoing care



Understanding Roles/Functions of Community Partners

- I understand the role and function of **Wraparound/care coordination services** in this community
- I understand the role and function of **mobile response/crisis stabilization services** in this community
- I have a good understanding of the other **mental health services and supports** available in this community
- Mental health providers and my school **communicate well** with each other after a referral for services has been made
- This school **collaborates well** with law enforcement/SROs when it comes to students with mental health needs



11

JJ System Partner Engagement

- Law enforcement/SROs
 - School-police MOA
 - Training
- Probation/Judges/Courts
 - Role of convener



12

Discipline Policy Consultation

Goal: Examine and revise disciplinary policies and practices where needed to support diversion efforts

Convene a workgroup, ideally building off an existing in-school team to develop a Graduated Response Model

Include restorative justice practices in disciplinary approach and in linkages to community-based organizations



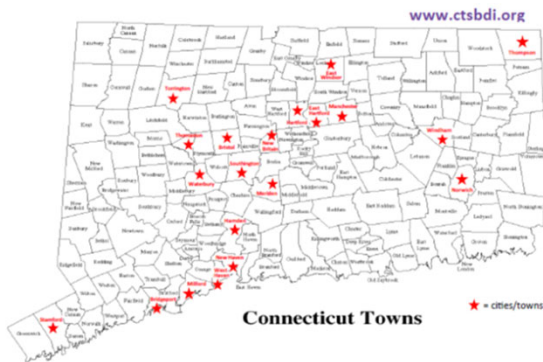
CHDI Child Health and Development Institute of Connecticut, Inc.

13

School-Based Diversion Initiative (SBDI)

PARTICIPATING SCHOOLS/DISTRICTS 2009-2020

A total of 56 schools in 20 districts implemented SBDI from 2009-2020.



Bridgeport Public Schools
Luis Munoz Marin School
Curiale School
Harding High School
Bristol Public Schools
Bristol Preparatory Academy
Bristol Eastern High School
Northeast Middle School
West Bristol School
Consolidated School District of New Britain
New Britain High School
Pulaski Middle School
Slade Middle School
CT Technical High School System
A.I. Prince Technical High School (Hartford)
Eli Whitney Technical High School (Hamden)
H.C. Wilcox Technical High School (Meriden)
Platt Technical High School (Milford)
East Hartford Public Schools
East Hartford High School

East Hartford Middle School
East Windsor Public Schools
East Windsor High School
East Windsor Middle School
Hamden Public Schools
Hamden High School
Hamden Middle School
Hamden Collaborative Learning Center
Hartford Public Schools
Academy of Engineering and Green Technology at Hartford Public High School
Culinary Arts Academy at Weaver High School
Hartford Public High School
Sarah J. Rawson School
Manchester Public Schools
Illing Middle School
Manchester High School
Meriden Public Schools
Francis T. Maloney High School
Orville H. Platt High School

Venture Academy
New Haven Public Schools
New Horizons School
Augusta Lewis Troup School
Wilbur Cross High School
Barnard Environmental Studies Magnet School
Norwich Public Schools
Kelly Middle School
Teachers' Memorial Middle School
Torrington Public Schools
Torrington High School
Torrington Middle School
Southington Public Schools
John F. Kennedy Middle School
Joseph A. DePaolo Middle School
Stamford Public Schools
Cloonan Middle School
Westhill High School
Thomaston Public Schools
Thomaston High School

Thompson Public Schools
Tourelotte Memorial High School
Thompson Middle School
Waterbury Public Schools
Crosby High School
Enlightenment School
Kennedy High School
North End Middle School
Wallace Middle School
West Side Middle School
Willy High School
West Haven Public Schools
West Haven High School
Bailey Middle School
Carrigan Middle School
Windham Public Schools
Windham High School

19

SBDI Benchmarks



25% decrease in the number of discretionary arrests in school

25% decrease in the number of out-of-school suspensions and expulsions



25% increase in referrals for youth at risk of arrest to appropriate school and community-based services and supports

Summary: Linking to Systems of Care

Holistic and strengths-based approach

Trauma-Informed

Acknowledge historical and structural trauma

Avoid re-traumatization

Broad stakeholder involvement

Parent/caregiver involvement

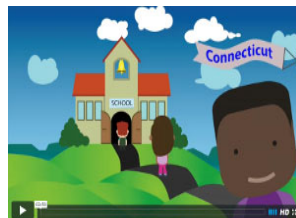


SBDI Resources

Toolkit



Videos



Reports



Follow Us:
@CHDICT

To Learn More Visit: www.ctsbdi.org

Contact Us:

Jeana Bracey bracey@uchc.edu
Jeff Vanderploeg jvanderploeg@uchc.edu

Alternative Community Engagement Services Center (ACES)

Pima County Juvenile Court Center
2225 E. Ajo Way, Tucson, AZ 85713
Phone: 520-724-5017
Probation Officer Supervisor: Geri Yrigolla
Email: gyrigolla@sc.pima.gov
Phone: 520-724-2077



ACES

- **Mission**

- *The mission of Pima County Juvenile Court and the ACES Center is to ensure children are protected, youth are rehabilitated, and the community is safe by administering timely and impartial justice and providing innovative services.*

- **Vision**

- *We instill hope and create positive change for children and families.*

Title II-Alternative to Detention

- **3 Year Governor's Office of Youth, Faith, and Family Grant** *(DVAC-reimagined)*
- **Planning Team established in 2016** *(16 PCJCC and 5 Community Members)*
- **Work Plan Developed**
- **Location** *(unused detention pod with outside/public access)*



3

Planning and Development

- **Modifications to Facility**
 - Respite Area Enhancement
 - Signage/Lighting/Landscaping
- **Policies and Procedures/Forms created**
 - 24/7, unlocked unit
- **Staffing 24/7** *(Probation Officers/Juvenile Detention Alternative Specialists-13 Total, initially)*



4

Implementation

- **ACES Database**
 - Separate from Justice Tools/JOLTSaz
 - Avoid using ACES visits as PJCCC 'history'
- **Outreach**

**OPEN HOUSE TO
COMMEMORATE OUR
ONE YEAR
ANNIVERSARY ON
Friday August 25th, 2017
10am-6pm**



5

Implementation

- **Screening Tools** *(assess individual needs)*
 - Gain-SS *(BH and Substance Use)*
 - Childhood Youth Resiliency Measure (CYRM)
 - Childhood Trauma Adverse Events Survey (CTES)-*Considered, need for immediate clinical expertise necessary*



6

ACES Service Provision

- **Respite** (*up to 23 hours*)
- **Crisis/Alternative Intervention Services**
 - *Voluntary participation youth/family*
- **Safety Planning** (*parent & youth*)
- **Success Planning** (*Kids at Hope*)



7

ACES Service Provision

- **Referral to Community Resources**
 - Crisis Response Center
 - Community Wide Resource list: BH services, Parenting Resources, Leisure activities, Educational Assistance, etc.



8

ACES Service Provision

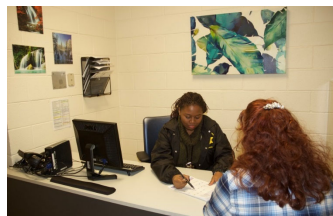
- **Case Management**
- **Transportation**
- **Activities** *(designed to engage youth)*



9

Youth Accepted

- Misdemeanor DV and/or Status Offenses
- Minors who do not meet the points at Intake for continued detainment
- Families/youth looking for early-intervention services (non-Court involved: walk-ins, call-ins, self-referred)
- Self-referred youth
- **Minors that police officers need to remove from situation for safety concerns (no Referral necessary)*



10

2018/19 Fiscal Year

Output Measure	NEW for the Quarter	Total for the Year
Number of program youth served*	156	606
Number of youth who exited program having completed program requirements	145	567
Number of youth who exited program (whether or not having completed requirements)	156	606
Number of families surveyed for satisfaction with program	60	223
Number of families satisfied with program	53	201

11

2018/19 Fiscal Year

	New this Quarter*	Total for Entire Program Year
Total Program Referrals	Total _156_	Total _450_
Age	0-10 yrs. _7_ 11-17 yrs. _148_ 18 or older _1_	0-10 yrs. _29_ 11-17 yrs. _574*_ 18 or older _3_
Sex	Female _69_ Male _89_	Female _238_ Male _370_
Race	American Indian/Alaskan Native _11_ Asian _4_ Black/African American _31_ Hawaiian/Other Pacific Islander _0_ White/Caucasian _110_ Other Race _0_ Unknown _0_	American Indian/Alaskan Native _46_ Asian _8_ Black/African American _81_ Hawaiian/Other Pacific Islander _1_ White/Caucasian _460_ Other Race _0_ Unknown _2_
Ethnicity	Hispanic/Latino (of any race) _81_	Hispanic/Latino (of any race) _323_
Parents/Caregivers Served	Total _200**_	Total _809**_

12

Questions?

13

WASHINGTON STATE & KING COUNTY'S STRATEGIC RESPONSE TO CSEC

Presentation by Kelly J. Mangiaracina J.D.
King County Superior Court
CSEC Policy and Program Manager

Additional content provided by CCYJ with special thanks to

Nicholas Oakley J.D.
Director of Programs and Policy Counsel
&
Laura Nagel
Program Coordinator

WASHINGTON STATE PARTIAL SAFE HARBOR LAWS 2021

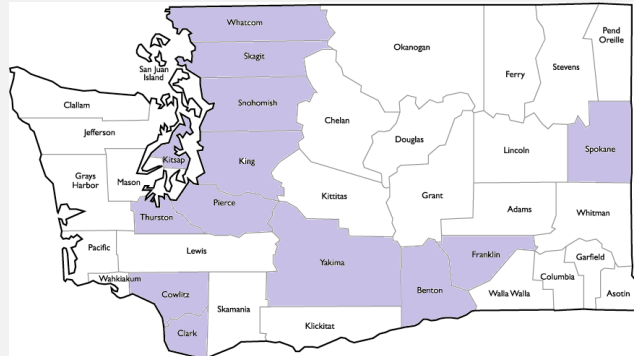
The passage of Senate Bill 6476 impacted the following RCWs

- [3.32A.030](#)
- [7.68.070](#)
- [13.40.070](#)
- [13.40.213](#)
- [9A.88.140](#)
- [9.68A.100](#) (CSAM)
- [9.68A.101](#) (PCSAM)
- [9.68A.105](#)
- [9.68A.110](#)
- [43.63A.740](#)
- [9.94A.515](#)
- [13.32A](#)
- [13.40](#)
- [74.15](#)

WASHINGTON STATE'S COORDINATED RESPONSE TO CSEC



0% in 2011



85% of population in 2020

3

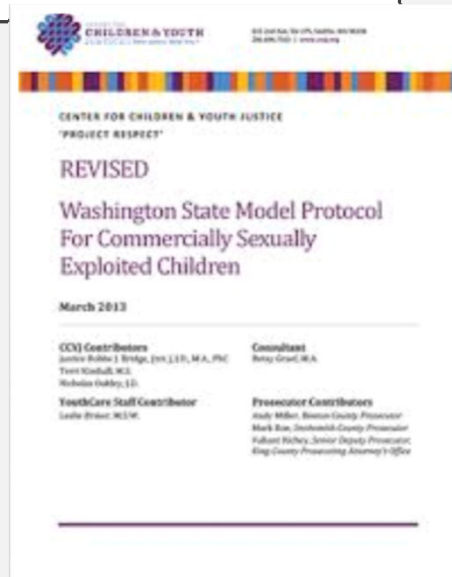
THE RESULT



4

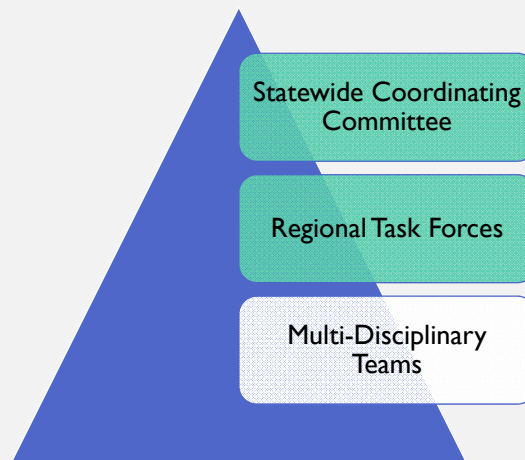
THE MODEL PROTOCOL

- Copies available for both the 2013 and 2016 reports (links will be provided)



5

STRUCTURE



6

STATEWIDE COORDINATING COMMITTEE

- 7/28/2013 Formal creation of the CSEC Statewide Coordinating Committee
- Text of full bill can be read [here](#).
- Text of the RCW (Revised Code of Washington) can be found on the website. Scheduled to sunset on June 30, 2023.
- Major Activities:
 - Oversee and review implementation of the Model Protocol
 - Monitor the coordinated response
 - Convene yearly meeting of all regional Task Forces and review their recommendations
 - Make recommendations to the legislature regarding policy and legislative changes
 - Oversee data collection
 - Review understanding and implementation of WA's 2010 Partial Safe Harbor Laws

7

COUNTY LEVEL TASK FORCES KING COUNTY

- King County is the largest county in Washington State with over 2.2 million people. (2018)
- CSEC Task Force Founded in April 2013 and chaired by a sitting Superior Court Judge (court of general jurisdiction).
- CSEC Task Force Coordinator hired in July 2013.
- Membership is intentionally inclusive. Over 120 organizations, departments, government agencies, & NGOs have attended a Task Force meeting.
- Meetings are quarterly and open to the public.

8

KING COUNTY TASK FORCE ACTIVITIES

- Advocacy
 - FREE to anyone ages 12-24 at risk of or experiencing CSE.
- Training
 - FREE to anyone who wishes to receive training
 - Visit www.KingCountyCSEC.org for all training options.
- Foster Care
 - ConnectUP a specialized foster care program
 - Visit www.ConnectUPWA.org for more information
- Evaluation
 - Rigorous 5 year evaluation by the University of Washington
 - Visit www.KingCountyCSEC.org/Evaluation



COUNTY LEVEL MULTI-DISCIPLINARY TEAM

- Formally incorporated into the King County Children's Justice Center – Ellie's Place, County level Child Advocacy Center
 - Visit www.cjckc.org
- Meets monthly to discuss case specific details.
- Invitation only:
 - King County Prosecuting Attorney Office – Senior Deputy Prosecutor & Executive Director of Ellie's Place.
 - FBI and Seattle Police Department – Victim Advocates
 - King County Sexual Assault Resource Center – Legal Advocates
 - Department of Children, Youth and Families – CSEC Liaison and Missing From Care Locators
 - Bridge Collaborative – CSEC Community Advocates
 - Court – CSEC Policy and Program Manager



CONTACT

Kelly Mangiaracina, JD
King County CSEC Policy and Program Manager
206.477.3114 Office
206.601.5563 Cell
Kelly.Mangiaracina@KingCounty.Gov

King County: www.KingCountyCSEC.org
Statewide Resources: www.wattraffickinghelp.org

